



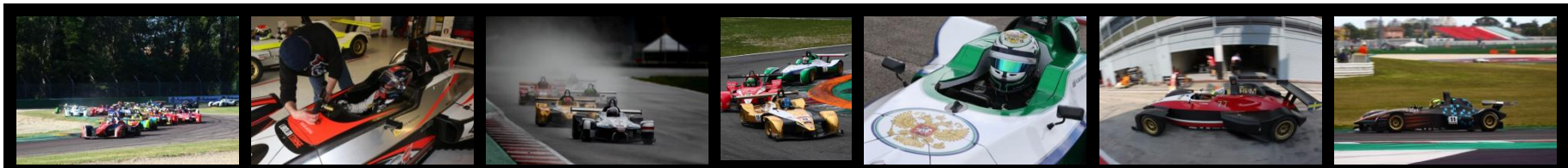
THUNDER
GB08



Wolf GB08 Thunder was born with the aim of being a **fast and easy to drive** race car that allows gentleman drivers to **easily obtain exceptional performance** thanks to its incredible **weight / power ratio of 1.71 (378 kg x 220 hp)** . The Italian Automobile Federation (**AciSport**) has chosen the Wolf GB08 Thunder as the **only car** allowed to participate in the **Italian Sports Prototype Championship** from **2018 to 2022**. Available in **1.0 liter** or **1.1 versions**, it is also the car suitable for **track days** and **hill climb**.

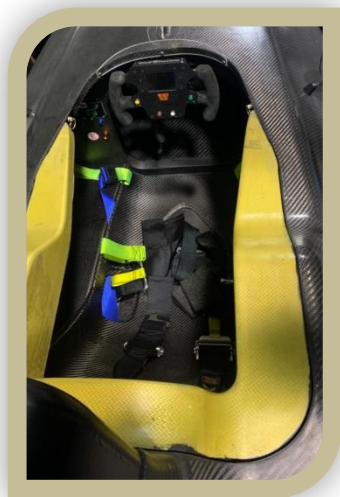


Prototipi
Campionato Italiano Sport





Chassis

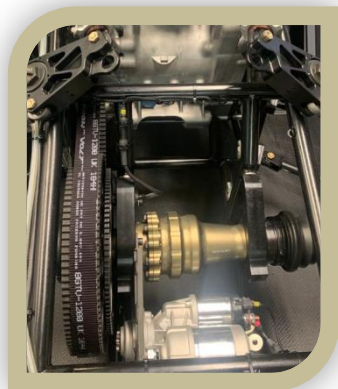


- Carbon fiber monocoque, Art.277 FIA approved
- Front and rear roll-bars, Art.277 FIA homologated
- Collapsible steering column, Art.277 FIA homologated
- Front carbon fiber crash box, Art.259 FIA homologated
- F3 FIA approved fuel tank 40 litres

Electronics

- Wolf Power multifunction steering wheel with paddle shift, backlight LCD display:
 - Shift light leds, predicted lap time
- Data acquisition with 10 analog outputs, download cable data provided:
 - GPS, internal accelerometer & gyro, brake pressure sensors
 - Suspension logging travel, steering wheel angle
- Radio cable output, HD Cam, Wolf Power engine software diagnosis

Transmission



- **Wolf Power LSD** limited-slip differential
- Paddle-activated, auto-blip, electronic gear-shift system
- Transmission system with carbon belt, changeable final transmission ratios

Engines



- **Aprilia RSV4** 1.0 or 1.1
- Power **201 hp** (1.0L) or **219 hp** (1.1L)
- Engine developed on dyno
- Specific lubrication system
- Wolf Power electronics
- Double air intake

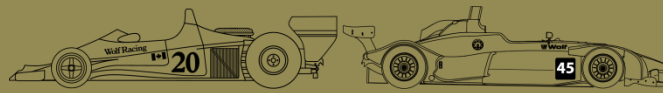




CHASSIS	Carbon fiber monocoque	
BODYWORK	Fiber glass done in autoclave	
AERODINAMICS	Adjustable rear wing	
SAFETY & EQUIPMENT	FIA Art.277	
FRONT SUSPENSION	Push rod with mono damper & configurable anti roll bar	
REAR SUSPENSION	Push rod with double wishbone & 2 dampers	
DUMPERS	Wolf Power 2 ways	
ECU & ELECTRONICS & PADDLE	Life - Wolf Power	
WHEELS	Front: 9x13" Rear: 10,5 x13"	
ENGINE	Aprilia RSV4 1.0 201 hp	Aprilia RSV4 1.1 219 hp
FUEL TANK	FIA F3 40 litres	
FRONT BRAKES	Disc 250 x 10 & monobloc caliper	
REAR BRAKES	Disc 250 x 10 & monobloc caliper	
LENGTH / WIDTH / WHEELBASE (mm)	4121 / 1783 / 2527	
WEIGHT	378 Kg	
CARBON BELT TRANSMISSION	Option	Yes
CARBON SEAT	Option	Yes
KIT DATA SENSORS & GPS	Option	Yes
RECEIVED BEACON	Option	Yes
REST FOOT	Option	Yes
REAR CARBON WING	Option	Option
HD CAMERA & CASE	Option	Option
DESIGN & WRAPPING	Option	Option

* In the **United States market** the **GB08 Thunder** is sold with both engines in the **basic version** or with the **Optionals Pack** which includes: carbon wing; data sensors (brake + GPS + steering); HD camera; transmission carbon belt





Automatic Chronograph

7750 - Limited Edition Swiss Made
matched to the chassis number

Wolf Collection

Exclusivity on the track and beyond



Men's Leather Jacket

Hand waxed leather with
exclusive handcrafted finishes

High-Performance meets High-Fashion

enel x

enel x

Audi Sport Audi Sport







Via Matteotti, 311 - 25063 Gardone Val Trompia (Brescia), Italy
Phone: +39 030 8349756 - Fax: +39 030 891379 - Email: info@wolfracingcars.com